

**ANNUAL REPORT OF THE FORESTRY
SERVICE
FOR THE YEAR 2007**

Main features of the year

The main features of the year were: -

(i) Conservator of Forests

Mr.S.Paupiah, Conservator of Forests, had proceeded on leave without pay for a period of three years with effect from 9 October 2006 to take up employment at UNDP as Project Manager of UNDP/GEF/FAO/GoM Project on Capacity Building for Sustainable Land Management in Mauritius and Rodrigues. As from the 9 October 2006, Mr.S. Appiah was the Acting Conservator of forests. The latter retired from the Service on grounds of age with effect from 5 July 2007. As from that date, Mr. Vishnu Tezoo was the Acting Conservator of Forests.

(ii) Nurseries, The Tree Seed Centre & Greenhouse

406,580 plants were raised in the six Nurseries, the Tree Seed Centre and the Greenhouse of the Forestry Service. A stock of 678,683 was carried over from the previous year and the stock remaining at the end of the year was 593,625. Some 71,779 plants were sold to the public.

(iii) National Tree Planting Campaign

22,292 plants were issued free of charge under the National Tree Planting Campaign.

(iv) Plantations

Some 50 hectares of new plantations were created. The plantations consisted mostly of Pine.

(v) Tending (Maintenance of young plantations)

Some 174 hectares of young plantations were weeded. Recruiting was carried out on 208 hectares to replace dead and dying plants. 417 hectares were cleaned of noxious weeds and undergrowths, 5 hectares were pruned and staking was carried out over an extent of 214 ha.

(vi) Forest Conservation

In-situ conservation has been effected at Les Mares, Gouly Père, Le Pouce and Perrier Nature Reserves.

The Greenhouse, Tree Seed Centre and other Forest nurseries have raised some 40,319 native plants (including ornamental and medicinal plants) during the year under review. Some critically endangered plants like *Trochetia parviflora* and *Psiadia arguta* have been successfully raised.

(vii) Recreational Forestry

Powder Mills Nature Walk, near SSR National Hospital, Pamplémousses, was inaugurated on the 17 May 2007 by the Honourable Arvin Boolell, Minister of Agro Industry & Fisheries, in presence of the Senior Chief Executive, Mrs. K. Beegum.

Nature Walk provides a great opportunity for people to enjoy leisure and recreational activities and to learn and appreciate the rare indigenous and endemic fauna and flora, their value to society and the need to conserve them.

Some 33,052 people visited Monvert, Bras D'Eau & Powder Mills Nature Walk during the year 2007.

(viii) Exploitation

5,851 m³ of timber and poles were put on the market along with 4,420 m³ of fuelwood.

(ix) Forest Legislation

The Forests and Reserves Act No. 41 of 1983 as amended by Act No.1 of 1986 and Act No.7 of 2003 is still in force for the administration and management of Forest Resources.

CHAPTER 1

Management

- 1.1 The new National Forest Policy was approved by Government on the 16th of June 2006. It accords highest priority to the environmental functions and non-consumptive uses of forests (Conservation of soil, water and biological diversity; recreation and ecotourism). The following ten main issues hindering progress in the forest sector have been identified and strategies to address each one of them have been proposed in the policy document:-
- (i) Conservation and protection of watersheds and other environmentally sensitive areas in Mauritius and Rodrigues;
 - (ii) Increasing tree cover to enhance the environment and the carbon sink capacity of the forests;
 - (iii) Degradation of native forests by invasive alien species;
 - (iv) Deer ranching
 - (v) Development of inland recreation and ecotourism;
 - (vi) Forest destruction by recurrent cyclones, fire, insect pests and diseases;
 - (vii) Conversion to forest of abandoned sugarcane land in environmentally sensitive areas;
 - (viii) Land degradation in Mauritius & Rodrigues;
 - (ix) Development of small forest-based businesses for income generation in Mauritius & Rodrigues;
 - (x) Improvement of the Forestry Service in Mauritius & Rodrigues.
- 1.2 The new approved forest policy, under which the State Forest Estate is managed, aims at:
- (i) Increasing tree planting in the catchment areas of rivers, lakes and reservoirs in the interest of soil and water conservation, for mitigating floods and droughts and for the retardation of siltation of reservoirs;
 - (ii) Conserving the natural heritage of the country by preserving the remaining forests with their unique fauna & flora, which represents the remarkable biological diversity and genetic resources of the country;
 - (iii) Increasing forest/tree cover to enhance the environment and the carbon sink capacity of the forests through afforestation, reafforestation and the National Tree Planting Campaign;

- (iv) Promoting the development of inland recreation and ecotourism activities for tourists and the local population;
- (v) Ensuring the sustainable management of forest lands leased for Shooting & Fishing (Deer Ranching);
- (vi) Improving the Forestry Service.

1.3 A National Forest Action Programme (NFAP) is being prepared to implement the National Forest Policy. The NFAP process started in August 2006. All key stakeholders were consulted and relevant projects were identified according to the ten priority issues highlighted in the National Forest Policy document. The preparation of a first draft of the NFAP document is expected to be completed by September 2008.

The Forest Area

1.4 The forest lands of Mauritius may be classified as follows:

I State-owned Forest Lands

(a) State lands

	<u>Area</u> <u>(Hectares)</u>	<u>Total Area</u> <u>(Hectares)</u>
(i) Plantations	11,878	11,878
(ii) National Parks	6,574	6,574
(iii) Islet National Parks	134	134
(iv) Nature Reserves		
(i) on mainland	200	
(ii) islets	599	799
(v) Bras D'Eau & Poste La Fayette Reserves	472	472
(vi) Vallee D'Osterlog Endemic Garden	275	275
(vii) Other Forest Lands	1,413	<u>1,413</u>
		<u>21,545</u>

(b) Pas Géométriques

(i) Plantations	222	
(ii) Leased for grazing and tree planting	230	
(iii) Others (mostly rocky)	179	<u>631</u>
Sub-total		<u>22,176</u>

II. Privately-owned Forest Lands

(a) Reserves protected by Law		
(i) Mountain Reserves	3,800	
(ii) River Reserves	2,740	6,540
(b) Private Reserves		13
(c) Plantations		2,600
(d) Forest lands, including scrub and grazing lands: (Figures not available but estimated at)		<u>15,847</u>
Sub-total		<u>25,000</u>

Grand Total 47,176

State Forest Lands

- 1.5 The total area of State Forest Lands was shown previously as 21,546 hectares. During the year under review about 1 Ha of State Forest land have gone to other uses. This brings along the total area to 21,545 ha.

Pas Géométriques

- 1.6 These form a narrow belt, theoretically 81.21 metres (250 French feet) in width, round the coast and are State-owned. There are several cases where the width is less than 81.21 metres or does not exist at all.
- 1.7 The total area of Pas Géométriques is about 2,110 hectares. Much of this is now leased for campement and hotel sites and has thus passed out of forestry use. Proclaimed and unproclaimed public beaches occupy a fairly large area around the Island. The area of Pas Geometriques under the control of the Forestry service has been reduced from 635 ha to 631 ha during the year under review.
- 1.8 Filao (*Casuarina equisetifolia*), a nitrogen fixing species, is mostly planted all along the coast. It is well adapted to coralline sand, grows fast and yields valuable timber, poles and firewood. On the windward side of the island, the Filao plantation acts as a valuable windbreak.

Privately-owned forest lands

- 1.9 Mountain Reserves occupy the upper slopes of mountains; parts are rocky and bare but many areas are densely covered with native forest or thickets of Traveller's palm (*Ravenala madagascariensis*). Most of these areas are being extensively used for deer ranching.
- 1.10 River Reserves are found on both sides of the rivers of the island and vary in width from 3 to 16 metres on each side according to the size of the river. As they are privately owned, they are controlled and maintained by the riparian owners. These are also regularly patrolled by Forest Officers.

Other Privately Owned Lands

- 1.11 It is estimated that there are about 15,847 hectares of privately owned land that is under scrub forest and is mostly managed for deer ranching.

Forest Legislation

- 1.12 The Forests and Reserves Act (Act. No. 41 of 1983) together with its amendments were still in force for the administration and management of Forest Resources.
- 1.13 The Wood Exploitation Licence Regulations 1992 proclaimed under Section 17 of the Forests and Reserves Act 1983 which states that "No person shall exploit timber, poles and firewood for commercial purposes from State-owned lands unless he holds a Wood Exploitation Licence issued under the authority of the Minister", were still applicable.

- 1.14 The Wildlife and National Park Act 1993 (Act No. 13 of 1993) is still in force for the conservation and management of Wildlife and National Parks. It makes provision for the creation of National Parks, reserves and buffer zones where (a) such land is of natural, scenic, scientific, educational, and recreational or other importance or value to the State (b) the preservation of the land is necessary to properly protect, to permit access to or management of, or to allow public viewing or enjoyment of an area of such land.
- 1.15 The Conservator of Forests is a member the Wildlife and National Parks Advisory Council.
- 1.16 The State Land (Amendment) Act No. 6 of 1986 and the Pas Géométriques (Amendment) Act. No. 7 of 1986 were still in force. These Acts give powers to the Minister of Housing, Lands, Town and Country Planning to evict squatters on State Lands and Pas Géométriques.
- 1.17 The Forests and Reserves Act No.41 of 1983 has been amended by the Forests and Reserves Act 2003 (Act No.7 of 2003), Government Gazette No.46 of 24 May 2003, to make provision for control of access to nature reserves.
- 1.18 State land Bras D'Eau and part of Pas Geometriques Bras D'Eau have been declared Bras D'Eau Reserve, and part of Poste LaFayette Pas Geometriques has been declared Mare Sarcelle Reserve under section 11(1) of the Wildlife and National Parks Act 1993 by Proclamations No.20 & No.21 of 2002 respectively. The total area of these Reserves is about 472 ha.
- 1.19 Eight islets namely Rocher des Oiseaux, Pigeon Rock, Ilot Vacoas, Ile D'Ambre, Ile Aux Oiseaux, Ile Aux Fous, Ile Aux Fouquets and Ile Aux Flamants of a total extent of about 134 ha were proclaimed Islets National Park on 25 May 2004.
- 1.20 The Vallée D'Osterlog Endemic Garden Foundation Act 2007 was proclaimed by "Proclamation No.17 of 2007" w.e.f. 4th September, 2007. The Garden, of an extent of 275 ha from the bottom of Vallee D'Osterlog to the Creole Mountain Range, including Mountain Laselle & Mountain Lagrave, is astride the districts of Moka and Grand Port.

CHAPTER II

A. Organisation of the Forestry Service

- 2.1 The Forestry Service is responsible, among other things, for the management of the State Forest Estates within which all silvicultural, conservation and recreational & leisure activities are carried out.
- 2.2 At the end of the year, the permanent establishment of the Forestry Service in Mauritius was made up as follows:

Professional and Senior Officers	6 (including 1 vacancy)
Technical officers	153 (including 32 vacancies)
Clerical and non-forestry Officers and employees	108 (including 20 vacancies)
Artisans, Gangmen and Lorry Loaders	148 (including 39 vacancies)
General Field & Office Premises Workers, Gardeners/Nurserymen and Head and Senior Gardeners/Nurserymen	960(including 282 vacancies)
TOTAL	----- 1, 375 (including 374 vacancies)

- 2.3 Appendix I gives the management chart of the Forestry Service and IA gives the territorial organisation of the Service. The smallest administrative unit of management is the Forest Section under the control of a Forester assisted by one or several Forest Guards. Twenty four Sections are grouped territorially into four Ranges, each administered by a Forest Ranger assisted by two deputy Forest Rangers. Two Ranges constitute a Division which is administered by a Divisional Forest Assistant. There are also four Forest Rangers stationed at Headquarters, one is in charge of the Curepipe Timber Store and Workshops (mechanics, blacksmiths and carpenters), another one is in charge of the flying squad and the internal control unit, the third one is in charge of Reserves and Records Unit and the fourth one is in charge of Forest Biodiversity Range that includes the Tree Seed Centre, Greenhouse and Ecotourism/Landscaping Unit.

B. Staff Movements

- 2.4 The following employees have retired from the Service:
- (i) Mr.Siram Appiah, Acting Conservator of Forests, retired from the Service on grounds of age on 5 July 2007;
 - (ii) Mr.Farook Nauyock, Divisional Forest Assistant, retired from the Service on grounds of age with effect on 17 July 2007;

- (iii) Two Officers of the General Service Cadre retired from the Service on ground of age in the year 2007: and
- (iv) Twenty-eight employees in the minor grades have retired from the Service in the year 2007.

2.5 The following Officers were promoted:

- (i) Mr. Ishan Chandra Beeharry was promoted as Divisional Forest Assistant with effect from 17 July 2007;
- (ii) Mr. Mohamed Roshan Sobratee was promoted as Forest Ranger with effect from 17 July 2007.
- (iii) Five Forest Guards were promoted as Temporary Assistant Park Ranger with effect from 13 July 2007 and posted to the National Parks & Conservation Service (NPCS).

2.6 Four employees in the minor grades passed away in the year 2007.

CHAPTER III

Forest Protection

Climatic Agencies

- 3.1 The weather was in general good except for the passage of Tropical Cyclone Gamède. Although the cyclone passed at about 240 kms at its nearest distance to the island of Mauritius during the night of 24th February, 2007, young forest plantations were affected and staking operation had to be carried out over an extent of 214 hectares to support the bent seedlings.

Weeds

- 3.2 With the climatic conditions prevailing in the country, tree plantations never suppress the undergrowth except in the drier areas of the coastal plain. The thorny climber 'Framboise marron' (*Rubus alcaefolius syn.R. roridus*) forms dense thickets in the upland plantations and this increases the cost of silvicultural operations. It is highly prickly and with its scrambling habits, it can reach the top of trees, eight to ten metres high, very rapidly and smother them. It spreads by seeds disseminated by the bird *Otocompsa jocosus* and by rooting whenever a branch touches the ground. *Psidium cattleianum* is a prolific shrub forming dense scrub in the upland forest. It is spread by birds, pigs, monkeys and human beings. The weed *Clidemia hirta* is invading forest plantation in the Nouvelle Découverte area and is smothering *Rubus* and other species. 'Liane margoze' (*Mikania scandens*) is a serious pest in many young plantations. *Hiptage benghalensis* which is a bad weed at low altitude is slowly spreading up the slopes. *Cuscuta reflexa* is another serious pest that is found as a parasite on a variety of hosts. It is spread by birds and by man.

Animals

- 3.3 Monkeys (*Macaca fascicularis*) are causing damage to plantations by ring barking trees. They continue to be a major pest in the native forest by eating the fruits and seeds of forest trees and preying on the eggs and young of native birds.
- 3.4 Nearly all State Forest Lands, even those in some water catchment areas are leased for shooting and fishing. The current stock of deer (*Cervus timorensis*) is increasing and it is causing considerable damage to plantations and native forests. The deer population in Mauritius is estimated at 70,000 heads, including those that are reared in intensive deer farms. The Shooting and Fishing lessees spend considerable sums on fencing, gamekeepers and opening of paths. The additional protection thus afforded to the forest offsets the inconvenience of having to curtail some forest operations during the shooting season - from the first Saturday of June to the last Sunday of September of each year.
- 3.5 Rats cause significant damage to the pine seeds as well as to seeds of both exotic and indigenous species. They also destroy the eggs of native birds.

Insect

- 3.6 Mauritius is fortunate in having no serious insect pests of forest trees, except for the aphid *Cinara cypripis*, which has caused a lot of casualties among the Cypress

(Juniperus bermudiana) population since its appearance in 1999. This rule out fresh planting of this species. The Eucalyptus weevil annually causes some defoliation of Eucalyptus robusta but only rarely causes mortality. Flamboyant (Delonix regia) planted as roadside and garden tree is affected by the leaf sucker Cerneura delonixia but is unlikely to cause serious damage.

Fungi

- 3.7 Pine plantations in the Nouvelle Decouverte region are affected by Armillaria. During the year under review, a significant number of dead Pine trees in patches caused by this disease were reported.

Fire

- 3.8 The number of fire incidents was 25 as compared to 26 in year 2006. Most of them occurred on the Port Louis Hills and other dry areas in the North and West. The total area burnt was about 4 hectares in protected areas and 150 hectares in unprotected areas. About 32 km of firebreaks were re-opened at a total cost of Rs 1,600,843.

Forest Offences

- 3.9 Appendix II gives the number and classification of forest offences during the year. 138 cases (133 in 2006) were registered, of which 17 were taken to court, 26 were dealt departmentally, 40 were outstanding and in 55 the offenders were unknown. Fines amounting to Rs 95,500 were imposed. At the request of the Police Authorities, timber and poles were evaluated in 7 cases (9 in 2006) of illegal possession.

CHAPTER IV

Surveys, Roads and Buildings

Surveys

4.1 The survey branch personnel was composed of one Senior Surveyor, one Survey and Mapping Assistant, one Draughtsman, two Head Polers, four Polers and seven Chainmen. The Surveyor, Surveying and Mapping Assistant and one Head Poler are on secondment from the Ministry of Housing and Lands.

4.2 During the year, the survey branch performed the following work:

(i)	Re-opening of boundary lines & Mountain Reserves Lines	21.95 km
(ii)	Area surveyed	154 ha
(iii)	Number of Notices to attend to Survey	40

Roads

4.3 About 158 kms of existing roads and paths were repaired and maintained at an average cost of Rs 35.70 per metre. The length maintained in each Forest Range was as follows :-

<u>Range</u>	<u>Length (km)</u>	<u>Cost (Rs)</u>
Northern	67	3,185,246
Eastern	48	1,829,116
Western	19	229,674
Southern	24	396,997
Total	158	5,641,033

Buildings

4.4 A sum of Rs 720,155 has been spent during the year on the construction of Black River Forest Office, Poste de Flacq Forest Office, Bras D'Eau Nursery Office and Sales Depot at Mahebourg.

4.5 A sum of Rs 26,144 has been spent on painting of Grand Bassin Forest Office, Repairs of FD Quarters and the construction of a toilet at Belle Vue Forest Office.

4.6 A sum of Rs 2,081,403 has been spent on Nature Walk Project.

CHAPTER V

Silviculture

State Forest Plantations

5.1 In 2007, the approximate distribution of state forest plantations (including Pas Geometriques) by types was as follows:-

	<u>Area(ha)</u>	<u>%</u>
Pine	8195	68
Other Softwood	1613	13
<i>Eucalyptus</i> and <i>Casuarina</i>	1443	12
Other hardwood (including indigenous spp.)	<u>849</u>	<u>7</u>
	<u>12,100</u>	<u>100</u>

5.2 The age class distribution of softwood plantations (mostly *Pinus elliottii*) was approximately as follows: -

<u>Years planted</u>	<u>Area (ha)</u>
Before 1960	72
1961 - 1965	109
1966 - 1970	1690
1971 - 1975	2133
1976 - 1980	2460
1981 - 1985	610
1986 - 1990	742
1991 - 1995	655
1996 - 2000	713
2001- 2005	494
2006 - 2007	<u>130</u>
TOTAL	<u>9,808</u>

5.3 The bulk of the state forest plantations consists mainly of *Pinus elliottii* and *Eucalyptus* species. Other species like *Cryptomeria japonica* and *Casuarina equisetifolia* are also grown.

- 5.4 *Cryptomeria* requires good and well-drained, but very wet and cool sites. The minimum altitude would appear to be 540m and the minimum rainfall 3000mm. Pine grows well on all other sites provided the soil is not water-logged and not too shallow. It will even regenerate naturally on sites which are free of all weeds but these are very rarely found.
- 5.5 *Eucalyptus robusta* is grown fairly successfully on moist lateritic clay soils at elevations of 300 to 600m. It stands an abundant rainfall, but requires superficial drainage where there is stagnant water. It tolerates limited drought. It is not wind resistant as many trees are uprooted by cyclones. *Eucalyptus kirtoniana* is grown at mid altitude.
- 5.6 *Eucalyptus tereticornis* which has been introduced in Mauritius since 1879, is grown below 300m altitude, on all kinds of soil including red clay, black clay and gravelly soils, on lands chiefly covered with Lantana and Aloes. It requires a moderate rainfall and grows well with 125 to 150mm of rain, falling during 100-200 days in the year. It can stand long droughts. It is not too wind firm in the early stages, but is quite good after about 15 years old. It is mostly grown for poles.
- 5.7 *Casuarina equisetifolia* thrives best on sandy beaches, but will grow on well-drained soils up to 600m elevation. On black stiff clays, it barely reaches 10 years of age. It is at its best with a rainfall of 150mm per annum distributed over 100 to 150 days, but tolerates 250mm rainfall per annum distributed over 250 days on well-drained soils. It is grown mostly for firewood and poles, though it is also used for flooring.

Nurseries

- 5.8. 208 kg of seeds of various forest species were collected locally at a cost of Rs. 73,215 exclusive of transport and storage costs. The amount of seeds collected by species is given below:

Species	Amount (kg)
<i>Pinus elliottii</i>	20.5
<i>Araucaria spp.</i>	57.5
<i>Casuarina equisetifolia</i>	2
<i>Eucalyptus spp.</i>	2
<i>Palm spp.</i>	62
<i>Indigenous species</i>	34
<i>Other Species</i>	30

Some 240 species of plants are raised in forest nurseries.

- 5.9 Some 276,374 cuttings of ornamental species like Hibiscus, Bougainvillea, Croton, Allamanda, Trochetia, etc, were prepared and raised in nurseries and greenhouse.
- 5.10 Some 406,580 plants were raised during the year in the six Nurseries, Greenhouse and the Tree Seed Centre of the Service. Details by species are given below: -

<u>Species</u>	<u>Stock left at 31.12.06</u>	<u>Stock raised in 2007</u>	<u>Stock remaining at end of 2007</u>
Pine	205,541	170,840	193,765
Eucalyptus	6,148	5,000	4,036
Cryptomeria	12,392	1,382	4,470
Casuarina	2,690	6,000	1,387
Araucaria	21,338	22,780	26,900
Juniper	136	-	109
Other exotic species*	346,268	160,259	318,306
Indigenous species*	84,170	40,319	44,652
Total	678,683	406,580	593,625

- *including ornamentals*

5.11 Rs. 22,472,498 were spent on the raising and maintenance of plants in the Nurseries, Greenhouse and the Tree Seed Centre.

5.12 About 22,292 plants were issued, free of charge, to various organizations, clubs and other Ministries under the National Tree Planting Campaign. Some 247,024 plants were used by the Forestry Service and 71,779 plants were sold to the public.

Tending

5.13 174 hectares of young plantations were weeded. Recruiting was carried out on 208 hectares. 417 hectares were cleaned of rampant creepers and exotic undergrowth. 5 hectares were pruned and staking was done on 214 hectares. Appendix III gives the various silvicultural operations that were carried out during the year.

Mechanisation

5.14 Owing to shortage of labour, the Service had to have recourse to mechanical means in order to be able to cope with its activities. There is every indication that this trend will have to be followed more and more in the future. An area of about 46 hectares was cleaned mechanically at a cost of Rs.455,060. Moreover, young forest plantations of an extent of 63 hectares were mechanically weeded at a cost of Rs 680,409.

CHAPTER VI

Conservation of Biological Diversity

In-Situ Conservation

- 6.1 In-situ conservation has been effected at Les Mares, Gouly Père, Le Pouce and Perrier Nature Reserves. Invasive alien species were uprooted and removed on an extent of about 9 hectares.

Survey of Native Vegetation

- 6.2 Survey of native vegetation has been conducted at Nature Reserve Le Pouce.

Creation of Nature Corner at Schools

- 6.3 This Service has set up Nature Corner in five primary schools during the year under review with a view to sensitize and familiarize pupils with endemic/indigenous plants and the needs to protect them. Moreover, Officers of this Service gave talks on forest conservation in primary and secondary schools around the island.

Production of Native plants including native medicinal plants

- 6.4 The Greenhouse, Tree Seed Centre and other Forest nurseries have raised some 40,319 native plants (including ornamental and medicinal plants) during the year under review. Some critically endangered plants like *Trochetia parviflora* and *Psiadia arguta* have been successfully raised.

Seeds of indigenous and endemic plants whenever available were collected and sown in nurseries, Tree Seed Centre & Greenhouse. Native plants are raised mainly for eventual planting out in the forests. They are also offered for sale to public in forest nurseries.

Our National Flower

- 6.5 *Trochetia boutoniana*, (Boucle d'Oreille) a rare endemic species, is the National Flower of the Republic of Mauritius. This flower also appears on the various insignia that are conferred by the Republic of Mauritius. This species is being propagated with a view to encourage every Mauritian to grow a plant in his yard.

Recreational Forestry

- 6.6 Monvert Powder Mills Nature Walk, near SSR National Hospital, Pamplemousses, was inaugurated on the 17 May 2007 by the Honourable Arvin Boolell, Minister of Agro Industry & Fisheries, in presence of the Senior Chief Executive, Mrs. K. Beegum.

Nature Walk provides a great opportunity for people to enjoy leisure and recreational activities and to learn and appreciate the rare indigenous and endemic fauna and flora, their value to society and the need to conserve them.

Some 33,052 people visited Monvert, Bras D'Eau & Powder Mills Nature Walk during the year 2007.

- 6.7 The Vallée D'Osterlog Endemic Garden of an extent of 275 hectares extends from the bottom of Vallée D'osterlog to the Créole Mountain Range, including Mountain Laselle, Montagne Lagrave, and is astride the districts of Moka and Grand Port. The Garden contains several critically endangered species and some of the rarest indigenous/endemic species. It is managed by The Vallée D'Osterlog Endemic Garden Foundation. Its main objective is to inform and sensitize visitors about the rich endemic flora and fauna of Mauritius.

Wildlife Management

- 6.8 *Macaca fascicularis (monkey)* is being caught from the wild and is also bred in captivity by Bioculture (Mauritius) Ltd., Senneville, Rivière des Anguilles and at Frederica, Bel Ombre, and by the Centre de Recherches Primatologique at Ferney, for export.
- 6.9 Most of the State Forest Lands are leased for Shooting & Fishing under the Shooting & Fishing Lease Act 1966. Deer ranching has become an important economic activity and the production of venison is about 450 tonnes annually (370 tonnes on private forest lands & 80 tonnes on state forest lands). However, considerable damage is caused to both planted and native forests due to rise in stocking density of deer. There is an urgent need to find a consensus among all concerned parties so that deer ranching activities are carried out in a sustainable way with least impacts on the environment.

The existing leases that were renewed in the year 2000 will expire in 2007. The rental, which is being phased over a period of seven years as from year 2000, are as follows: -

	SHOOTING AND FISHING		GUARDIENNAGE
	Upland Plateau (Rs)	Low to Mid-Altitude (Rs)	(Rs)
Year 1	200	100	35
Year 2	250	125	55
Year 3	300	150	75
Year 4	350	175	95
Year 5	400	200	115
Year 6	450	250	135
Year 7	500	300	150

CHAPTER VII

Exploitation and Utilization

Marketing of Forest Produce

- 7.1 The Agreement between the Government of Mauritius and Messrs Grewals (Mauritius)Ltd. granting the Company the right to exploit timber from State Lands has been renewed on 26 September,2007 for a period of 5 years. By virtue of this Agreement, Messrs Grewals (Mauritius)Ltd., is allowed to fell trees and extract round logs of marketable timber, not exceeding 2,500m³ annually. The prices of timber, poles and firewood (2006) are still in force. There still exist two categories of prices for logs of class III Timber, which includes Pine. The logs of 24cms diameter and above are offered at Rs 1,050 per m³ and logs of 18cms to less than 24cms diameter at Rs 850 per m³.
- 7.2 Timber from State Lands was sold to woodmerchants registered with the Forestry Service on the same basis as Messrs Grewals (Mauritius) Ltd. They also bought firewood and poles from this Service.
- 7.3 Poles and tool handles were also cut by the Forestry Service and supplied against payment to other government departments.

Production of Timber and Firewood

- 7.4 The following quantities of wood were sold during the year.

	Cubic metres (Round wood)
(i) <u>Timber</u>	
(a) Hardwood	27
(b) Softwood	4,825
(ii) <u>Poles</u>	
(a)Hardwood	691
(b)Softwood	308
(iii) <u>Fuelwood</u>	
(a)Firewood	4,420
b)Charcoal	-

- 7.5 The volume of logs sold was comparatively lower than in the previous year. Grewals (Mauritius) Ltd purchased 2,094m³ (2,165m³ in 2006) of the above-mentioned timber of over 18 cms diameter, and 2,758 m³ (3,891 m³ in 2006) were sold to woodmerchants holding Wood Exploitation Licence.

- 7.6 In addition, a limited volume of wastewood in the form firewood of Privet and Chinese Guava sticks was removed, free of charge, by the forest workers and members of the public from State Lands all over the island.

Minor Forest Produce

- 7.7 The sale of Christmas trees, tool handles, bamboos, nursery plants and other minor forest produce amounted to Rs 3,254,683 (Rs 2,651,365 in 2006).
- 7.8 Appendices IV and IVA give the selling rates for timber and poles that are in force.
- 7.9 No data on forest produce from private land is available.

Timber Processing

- 7.10 The Concessionnaire Grewals (Mauritius) Ltd., runs a modern sawmill and timber preservation plant at Pailles, employing some 77 workers on cutting, extraction, sawmilling, etc. Owing to the shortage of large size logs from State Lands, this Company also buys substantial quantities from abroad. There are, in addition, three reasonably large sawmills and about 23 small ones, scattered over the island employing about 160 workers. The Service has no control over the licensing of these sawmills, many of which operate on a part-time basis.
- 7.11 Other small wood-based industries include a match factory at Roche Bois and about 1,400 furniture factories, out of which 1,230 employ less than 10 artisans each, all over the island.

Timber Imports

- 7.12 The amount of sawn timber imported during the year was 77,037 m³, equivalent to about 132,503 m³ of roundwood. The timber was mainly imported from Madagascar, Malaysia and South Africa. The CIF value was about Rs 830 million (Rs 425 million in 2006).

Local consumption of Timber

- 7.13 The local consumption of sawn timber (both imported and local production) over the last (10) ten years is given below:

VOLUME IN M³

Year	Imports	Local production	Total
1998	49,210	5,653	54,863
1999	39,210	3,226	42,436
2000	36,853	2,757	39,610
2001	55,370	2,558	57,928
2002	42,306	2,207	44,513
2003	38,115	2,169	40,284
2004	63,184	2,638	65,822
2005	64,979	2,685	67,664
2006	51,794	3,521	55,315
2007	77,037	2,821	79,858

*The figures for local production do not include timber sold from private lands. The factor roundwood: sawnwood is taken as 1.72:1

- 7.14 The local consumption of wood, excluding plywood, paper, etc. during the year was as follows:

Volume m³ - roundwood

	Timber	Poles	Fuelwood	Total
I.From State Lands				
(a) Sold	4,852	999	4,420	10,271
(b) Cut departmentally	22	23	344	389
(c) Removed free of charge (estimated)	-	-	1,352	1,352
II.From Private Lands (estimated)	458	531	951	1,940
III.Imports (Roundwood equivalent)	132,503	8161	-	140,664
Total	137,835	9,714	7,067	154,616

- 7.15 Appendix V gives the statement of revenue and expenditure of the Forestry Service for the year 2007, for Mauritius and Rodrigues.
- 7.16 The total expenditure for Mauritius amounted to Rs. 146,984,562
- 7.17 The total revenue for Mauritius amounted to Rs 16,333,637.

CHAPTER VIII

Rodrigues

Staff

- 8.1 Forestry Staff in Rodrigues, although subject to technical direction from the Conservator of Forests, is answerable in all day today matters, to the Departmental Head, Commission for Forestry. The island has its own staff establishment and is funded by the Rodrigues Regional Assembly through the Commission for Forestry.
- 8.2. At the end of the year, the permanent and pensionable establishment of the Service in Rodrigues was made up as follows:

Rank	No.	Remarks
Officer in Charge of Forestry	1	
Forest Ranger	1	
Deputy Forest Ranger	1	One (1) Post Vacant
Forester	4	
Forest Guard	22	
Clerk	1	
Gangman	5	
Head Gardener/Nurseryman	1	One (1) Post vacant
Gardener/Nurseryman	5	
Watchman	41	
Woodcutter	16	
Office Caretaker	1	
Store Keeper	1	
General Worker	41	
Launch Driver	1	
Boatman	2	
TOTAL	144	

Protection

- 8.3 Straying cattle and goats were the main cause of damage to young plantations. One hundred and fifty two cases of allowing animals to graze on State Lands were taken to Court. (15) Fifteen cases of unlawful destruction and (2) two cases of illegal possession of forest produce were tried and fined. At the end of the year, (43) forty three cases allowing animals to graze on State Land, (3) three cases of illegal possession of wood and (2) two cases of unlawful destruction were still awaiting prosecution.

Silviculture

- 8.4 69,277 seedlings were raised during the year at Solitude and Oyster Bay Nurseries. 7,295 seedlings were sold to the public.
- 8.5 About 15 hectares of forest lands have been rehabilitated with both exotic and endemic tree species. The main species used were: *Albizia lebbbeck*, *Acacia*

auriculiformis, Delonix regia Tabebuia pallida, Juniperus bedfordiana, Vitex glabrata, Terminalia arjuna and Endemic species.

- 8.6 Weeding was carried out over about 2 hectares of forest plantations, 7.5 hectares were cleaned, 10.8 hectares were thinned and 1,200 running metres of fence were repaired.

Nature Reserves

- 8.7 The Forestry Service and the Mauritian Wildlife Foundation carried out conservation works in Nature Reserves at Grande Montagne, Anse Quitar and Cocos & Sandy Islets. Exotic plants were uprooted/weeded and indigenous plants were planted.

Revenue and Expenditure

- 8.8 Expenditure amounted to Rs 19,261,355 compared to Rs 19,961,152 in the previous year. The revenue collected amounted to Rs 129,010 (Rs 163,337 in 2006).

CHAPTER IX

Miscellaneous

- 9.1 The staff of the Service gave several talks on forest conservation and wildlife both in schools and in public social gatherings. They took various parties of secondary school children on ecological tours to the forests.
- 9.2 The Service continued to work in close collaboration with the Government Tourist Office, the National Monuments Board and the Nature Reserves Board, as well as the Town and Country Planning Board of the Ministry of Housing, Lands, Town and Country Planning and several other governmental and para-governmental organisations.
- 9.3 The Service gave advice to several organisations on landscaping and on matters pertaining to Forestry and Nature Conservation.

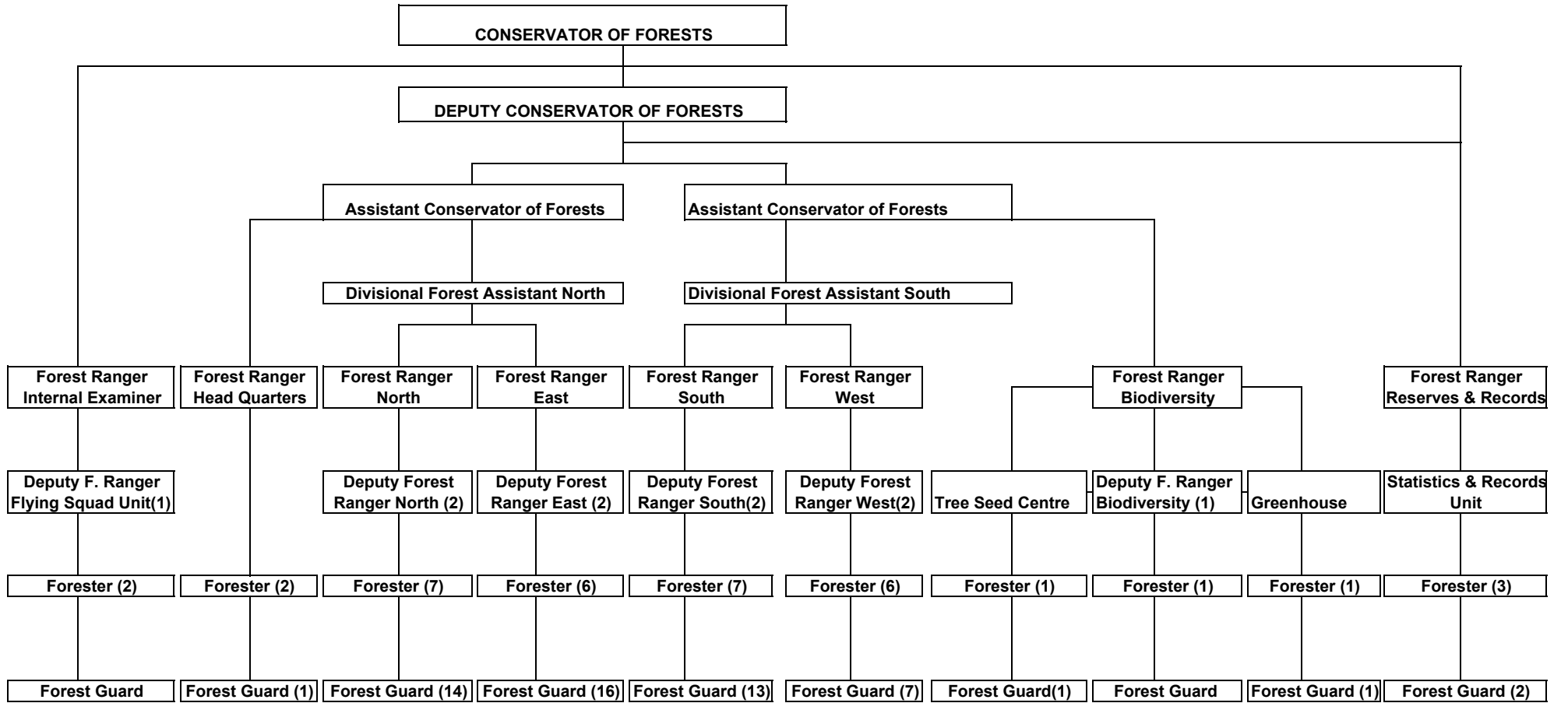
Publications

- 9.4 The following is a list of articles, reports and books that have a bearing on Forestry, Wildlife and the Environment in Mauritius:-
- (a) Forestry Service/FAO (2006) New National Forest Policy
- (b) S.A. Paupiah (2004) Concept Note, Update on the Status of the National Forest Programme and Request for a Partnership Agreement with the National Forest Programme Facility
- (c) S.A.Paupiah (2001) Forestry Outlook Study for Africa (FOSA)
- (d) S.A.Paupiah(2001) Forest Revenue System and financial support for Sustainable Forest Management in Mauritius
- (e) S.A. Paupiah(2001) Forest Biodiversity in Mauritius - Paper presented during National Biodiversity Strategic Action Plan (NBSAP) Thematic Workshop held in January 2001
- (f) Guého, J.& Owadally, A.W. (in press) *Bibliographie des travaux d'histoire naturelle et science connexes concernant Maurice* (504pp)
- (g) Lind, R (1994) Management of the EEP (European Endangered Species Programme) Pink Pigeons *Columba (Nesoenas) mayeri* Population. **Dodo, J.W.P.T. 30**:106-113.
- (h) North,(1994) S.G. *et al.* Changes in the vegetation and reptile populations on Round Island, Mauritius, following eradication of rabbits. *Biol. Conserv.* **67**:21-18
- (i) Owadally (1995) *Report on River Reserves*. This Report was submitted A.W., Pong Kim Kam, to the Ministry of Agriculture and Natural Resources. Jootun, L & Tezoo, V 26pp + 8 appendices + 2 maps
- (j) Bosser,J.(1997) *Flore des Mascareignes: La Reunion, Maurice,*

Rodrigues. MSIRI.

- (k) Rouillard,G.(1999) & Gueho,J. Les plantes et leur histoire à Maurice
- (l) Gurib-Fakim,A.(1999) & Gueho,J. Natural Toxins and poisonous plants in Mauritius.UNDP
- (m) Claude Michel(1992) (3rd Edition) Birds of Mauritius
- (n) Th.Cadet (1998) (12th Edition) Fleurs et plantes de la Reunion et de l'île Maurice
- (o) Staub, F. (1993) Fauna of Mauritius and associated flora
- (p) Gurib,A.(1995-1996) & Gueho,J. Plante Médicinales de Maurice-Tome 1,2 et 3

ORGANISATIONAL CHART OF THE FORESTRY SERVICE 2007



APPENDIX I A

Territorial Organisation of the Forestry Service - 2007 **(Chapter II refers)**

DIVISION NORTH

Northern Range

Forest Sections

1. Northern
2. Pamplémousses
3. Bras D'Eau
4. Montagne Longue
5. Port Louis
6. Pailles

Eastern Range

Forest Sections

7. Flacq
8. G.R.S.E
9. Eau Bouillie
10. Salazie
11. Thorel
12. Vuillemin

Southern Range

Forest Sections

13. Curepipe
14. Grand Bassin
15. Parc aux Cerfs
16. Rivière du Poste
17. Rivière La Chaux
18. Grand Port

DIVISION SOUTH

Western Range

Forest Sections

19. Sophie
20. Les Mares
21. Bel Ombre
22. Chamarel
23. Rivière Noire
24. La Ferme

APPENDIX II

SUMMARY OF OFFENCES AGAINST FOREST LAWS DURING YEAR 2007

(Chapter III refers)

CATEGORY OF OFFENCES	No . of offences				
	TAKEN TO COURT	DEALT BY DEPT	OUTSTANDING	UNKNOWN	TOTAL
1. Unauthorised felling/removal					
(a) State Forest	3	4	9	36	52
(b) River Reserves	2	-	4	3	9
(c) Road Reserves	2	3	5	1	11
(d) Pas Géométriques	3	-	2	10	15
(e) Mountain Reserves	-	-	-	-	-
2. Illegal Possession of Wood					
(a) State Land	-	-	1	-	1
(b) Pas Geometriques	-	-	-	-	-
3. Encroachment					
(a) State Land	-	-	-	-	-
(b) River Reserves	2	3	6	1	12
(c) Mountain Reserves	-	1	1	-	2
(d) Pas Geometriques	-	-	2	-	2
4. Illegal Deposit of Stones/ Materials					
(a) State Land	-	1	-	-	1
(b) River Reserves	2	7	4	3	16
(c) Pas Geometriques	-	1	-	1	2
5. Illegal Possession of Implements					
(a) State Land	-	-	-	-	-
(b) River Reserves	-	2	-	-	2
(c) Pas Géométrique	-	-	-	-	-
6. Erection of Structures					
(a) River Reserves	3	4	6	-	13
7. Animals grazing on State Land					
	-	-	-	-	-
Total	17	26	40	55	138

APPENDIX III
(Chapter V refers)

Silvicultural operations carried out in plantations during 2007
(AREAS IN HECTARES)

OPERATION	CLEARING FOR PLANTING	PLANTING	WEEDING	RECRUITING	STAKING	CLEANING	PRUNING
FOREST RANGE							
NORTHERN	-	-	4.6	1.7	-	236	-
EASTERN	41	45	139	151	137	83	-
SOUTHERN	15	5	30.4	49	62	38	5
WESTERN	-	-	-	6.3	15	60	-
Total areas in hectares	56	50	174	208	214	417	5
TOTAL COST(Rs)	841,925	772,015	5,172,397	754,466	564,603	8,422,472	9603

GRAND TOTAL COST = Rs 16,537,481

AVERAGE COST/Ha(Rs)	15,034	15,440	29,726	3,627	2,638	20,198	1,921
---------------------	--------	--------	--------	-------	-------	--------	-------

APPENDIX IV

Selling Rates of Timber for the year 2007 (Chapter VII refers)

(a) Standing Timber (i.e. basic royalty)

Class I	-	Rs.2,160 per m ³
Class II	-	Rs. 1,320 per m ³
Class III	-	Category I (Rs. 1,050 per m ³ for timber of 24 cm diameter and above) Category II (Rs. 850 per m ³ for timber of 18 cm to less than 24 cm diameter)
Class IV	-	Rs. 400 per m ³

(b) Sound logs at Roadside (i.e. basic royalty + labour)

Class I	-	Rs. 3,140 per m ³
Class II	-	Rs. 2,320 per m ³
Class III	-	Category I - (Rs. 2,160 per m ³ for timber of 24 cm diameter and above) Category II - (Rs. 1,820 per m ³ for timber of 18 cm to less than 24 cm diameter)
Class IV	-	Rs. 1,420 per m ³

(c) Sound logs at Curepipe Timber Store (i. e. royalty + labour + transport)

Class I	-	Rs. 4,630 per m ³
Class II	-	Rs. 3,810 per m ³
Class III	-	Category I - (Rs.3,300 per m ³ for timber of 24 cm diameter and above) Category II (Rs. 2,640 per m ³ for timber of 18 cm to less than 24 cm diameter)
Class IV	-	Rs.2,320 per m ³

APPENDIX IV A
SELLING RATES OF POLES (2007)

Selling rates for poles per metre or part of metre
(Chapter VII refers)

Base diameter class		0-3cm	3-6cm	6-9cm	9-12cm	12-15cm	15-18cm
Sold Standing	A*	1.00	1.50	3.00	5.50	9.10	12.20
	B*	0.90	1.40	2.20	4.10	7.20	9.10
Cut at Roadside	A*	2.10	3.00	5.10	8.10	11.80	16.00
	B*	1.50	2.60	4.10	6.10	8.60	12.20
At Curepipe	A*	3.00	5.10	6.70	10.10	13.60	18.40
Timber Store	B*	2.00	3.50	5.60	8.10	11.20	16.00

* Class A - Cedar, guava and all indigenous spp.

* Class B - All other species

Note: (i) When measurement falls exactly on a diameter class limit use the higher class e.g. 6-9cm means 6cm to less than 9cm

(ii) When measuring length of poles, any excess over a metre will be considered as follows:

Poles of length up to 1.25m will be accounted as 1 m.

Poles of 2.26m up to 2.75m will be accounted as 2.5 m.

Poles of 2.76m to 3.25m will be accounted as 3 m.

APPENDIX IV (cont.)

Class I

1. Albizia lebbeck
2. Albizia procera
3. Artocarpus integrifolia
4. Sideroxylon grandiflorum
5. Canarium paniculatum
6. Dalbergia latifolia
7. Diospyros spp.
8. Eugenia glomerata
9. Labourdonnasia calophylloides
10. Mimusops maxima
11. Mimusops petiolaris
12. Ocotea cupularis
13. Swietenia spp.
14. Tabebuia spp.
15. Tectona grandis

Class II

1. Berrya ammonilla
2. Cassia spp.
3. Calophyllum inophyllum
4. Castanospermum australe
5. Cedrela spp
6. Cinnamomum camphora
7. Cordia spp.
8. Cunninghamia sinensis
9. Elaeodendron orientale
10. Eucalyptus citriodora
11. Gmelina arborea
12. Grevillea robusta
13. Juniperus bedfordiana
14. Melia azadarach
15. Olea lancea
16. Pterocarpus indica
17. Terminalia spp.
18. Vitex glabrata
19. Tristania conferta
20. Cryptomeria japonica

Class III

- | | |
|------------------------------------|---|
| Divided into two categories | 1. Acacia spp. |
| Category I-24cm diameter and above | 2. Agathis spp. |
| | 3. Araucaria spp. |
| | 4. Azadirachta indica |
| | 5. Samanea Samans |
| | 6. Eucalyptus spp. (except E. citriodora) |
| Category II | 7. Intsia bijuga |
| 18cm to less than 24cm diameter | 8. Lagerstroemia speciosa |
| | 9. Michelia champaca |
| | 10. Pinus spp. |

Class IV

1. Casuarina spp.
2. Dillenia speciosa
3. All other species

APPENDIX V

SUMMARY OF REVENUE AND EXPENDITURE FOR THE YEAR

ENDING 31ST DECEMBER 2007

(1 US\$ is about 31 Mauritian Rupees)

A.MAURITIUS

<u>Revenue</u>	<u>Amount (Rs)</u>	<u>Expenditure</u>	<u>Amount (Rs)</u>
		Personal Emoluments	112,723,467
Sale of Forest Produce	9,309,433	Travelling	17,870,616
Shooting and Fishing Rights	5,428,318	Uniforms	2,771,921
Wood Exploitation Licence	198,000	Maintenance and Running of vehicles	1,430,114
Registration Fees	1,373,886	Others	4,154,175
Horticultural Lease	24,000	Sub Total	140,234,822
		Capital Vote	6,749,740
Total	16,333,637	Total	146,984,562

B. RODRIGUES

<u>Revenue</u>	<u>Amount (Rs)</u>	<u>Expenditure</u>	<u>Amount (Rs)</u>
Sale of Major Forest Produce	108,867	Personal Emoluments	16,478,952
Sale of Minor Forest Produce	4,015	Travelling and Transport	1,736,440
Sale of Plants	10,328	Overtime	41,937
Sale of Christmas trees	5,800	Other operating expenses	1,004,026
Total	129,010	Total	19,261,355

APPENDIX VI

MAIN IMPORTS OF FOREST PRODUCE FOR THE YEAR 2007

H.S. Code	Description	Unit	Country of origin	Quantity	CIF Value (Rs)
44011000	Fuelwood in logs, in billets, in twigs, in faggots or in similar forms	kg	France, S.Africa, Netherlands.	15	7070
44012100	Coniferous wood in chips or particles	kg	USA & Germany	3205	405515
44013000	Sawdust,woodwaste,scrap in logs,briquette, pellet etc	kg	France, S.Africa, Netherlands.	744	97207
44020000	Wood charcoal(including shell or nut charcoal)	kg	S.Africa, USA, Spain, China, Turkey, Madagascar, UAE	137373	1816218
44031000	Rough wood,stripped of bark or not,paint,stains etc treated	m3	S . Africa, Malaysia, Madagascar	5090	68065304
44034100	Rough wood or wood roughly squared (non-coniferous)	m3	Malaysia, Myanmar,S.Africa,France, Cameroon, Mozambique, Madagascar, USA, Taiwan, Canada, India, Russian Fed.	3070	65909355
44041000	Hoopwood,split poles,pile chipwood, unworked	kg	S.Africa, France, Malaysia, Madagascar	177301	4178682
44042000	Hoopwood,split poles,pile,chipwood etc non-c	kg	S.Africa, France, Malaysia	33765	798523
44071000	Coniferous wood sawn thickness > 6mm planed or sanded or not	m3	Myanmar, Madagascar,Cameroun,Malaysia, S.Africa, Congo,New Zealand, China, Tanzania, Australia, India	12584	145198551
44072400	Non-coniferous woodsawn or chipped not planed/sanded etc of a thickness exceeding 6mm	m3	Myanmar,Congo,Cameroun,France,Italy,Mozambique, Madagascar,USA,China,Indonesia,Malaysia,Chile, S.Africa,N.Zealand,Cote D Ivoire,Russian Fed,Switzerland, UAE, Taiwan, Tanzania, Australia, Singapore, Ghana, Brazil, Uganda, Canada, Phillipines	64453	684623819
44081000	Veneer sheet of wood n.e.s of a thickness not exceeding 6mm	kg	Madagascar, China, Malaysia, Taiwan, France, Myanmar	169754	4961345
44083900					
44089000					
44091010	Mouldings for frames for painting,photo,mirrors,etc (Conifer)	kg	China,Madagascar, UK, India, UAE, Indonesia, ,Malaysia, France, South Africa, Singapore.	61422	3127555
44091090					
44092010	Mouldings for frames for painting,photo,mirrors,etc; Dowelling in the length(Non-Coniferous wood)	Kg	UK,Italy,Madagascar,Taiwan,Thailand,S.Africa,Indonesia,Malaysia,India,China, France, Italy, Reunion,Germany, Brazil, Singapore, UAE.	180441	10231045
44092090					
44102100	Oriented strand board and Wafer board	kg	Madagascar,Malaysia,Singapore,France, S.Africa, ,China,Thailand, Switzerland,India,Belgium, Indonesia, UK.	1119051	20713187
44109000	Particle board and similar board of wood,or other ligneous material				
44111100	Fibreboard of wood not mechanically worked	kg	Germany,Malaysia,S.Africa,UAE,New Zealand, Singapore,France,Belgium, Italy,China, Thailand, Taiwan,Indonesia.	10395353	182476920
44119990	Medium Density Fibreboard				

44121300 44129900	Plywood,veneer/laminated panel	m3	Kenya,Malaysia,Singapore,France, India,S.Africa,China,Thailand,Indonesia, Germany, Taiwan, Japan	29614	224195514
44130000 44140000	Densified wood in blocks,plates, strips Wooden frames for paintings, photograph, mirrors or similar objects	kg	China,France,UK,Italy,UAE,USA,Pakistan,Indonesia,India,Spain , Madagascar,Malaysia, Germany, Canada, Belgium, Iceland,Thailand,S.Africa, Czech. Rep.	78764	3373950
44151000 44152000	Packing cases,boxes,crates,drums of wood pallets,box pallets and other boards	number	France,South Africa,China, Australia, Syria, Indonesia,Germany,Spain.	1479	1646705
44160000	Casks, barrels, vats, tubs, other coopers products and parts thereof	kg	France,UK, South Africa	5407	1379822
44170010 44170090	Tools,tool bodies,broom or brush bodies, handles of wood boot & Shoe lasts	kg	Indonasia, Mexico, France,Thailand,USA, India,China,Taiwan,Malaysia,S.Africa.	120938	8139354
44181000 44219090	Builders joinery and carpentry of wood tableware and kitchenware etc., Doors,Windows and their frames of wood, Parquet panels of wood, Statuette & other ornament of wood, articles of wood,shuttering,shingles and shakes,woodmarquetry,clothes hangers of wood,match splints	kg	Indonesia,India,Singapore,UK,Tanzania,France, Italy,Malaysia,Zimbabwe,Bahamas, Netherlands,Denmark, Thailand,S.Africa,Sweden,Taiwan,Korea, Switzerland,China,Pakistan,Turkey,Vietnam, Germany,Spain,H.Kong,Japan,Kenya,Philippines, Uganda, Madagascar,Belgium,Australia,UAE,Canada,Reunion,Guyana,U SA,Luxembourg,Slovenia, Cote D'Ivoire, Syria,Burundi, Myanmar	2366898	97005035
45031000 46029000	Corks, stoppers, tiles of any shape, mat, basket, wickerware, plait	kg	China,France,India,Portugal,S.Africa,UK,Germany,USA,Spain, Malaysia,H.Kong,Indonesia,Ireland, Taiwan,Belgium, Sri Lanka, Italy, Japan,Korea,Greece, Italy,Japan,Madagascar,Vietnam,Singapore, Philippines Thailand Zimbabwe Egypt Kenya Netherlands	208971	19952541
47032100	Semi bleached coniferous chemical wood pulp	kg	Sweden, USA.	925478	26061899
47041900	Unbleached non-coniferous chemical wood pulp	kg	S.Africa	45	1039
470790000	Waste/Scrap of paper/paperboard nes excl470710-30,incl unsorted	kg	Spain	25	4839
48010000	Newsprint in rolls or sheets	kg	Indonesia,India,Russian Fed.,Malaysia, USA,S.Africa,China,Japan.	6329684	139915426
48021000 48026990	Hand-made paper and paperboard of any size or shape -other paper and paperboard, uncoated base paper/board	kg	Singapore,Germany,UK,Japan,USA,Korea,S.Africa,Belgium,Bra zil,China,Netherlands,Portugal, France,Indonesia,India,Italy,Malaysia,Thailand, Sweden,UAE,Malaysia,H.Kong,Taiwan,Finland	6218171	209446040

48030000 48189090	Toilet, facial tissue, towel, napkin, uncoated kraft paper, unbleached kraft paper, semi chemical fluting paper, testliner, other uncoated paper & paper board, vegetable parchment, Greaseproof papers, Tracing papers composite paper, kaolin coated paper, handkerchiefs, self-copy paper, household articles, articles of apparel, etc.	kg	China, France, H. Kong, Indonesia, Malaysia, Spain, Siera Leone, Austria, Singapore, S. Africa, Thailand, UK, Australia, Taiwan, India, Korea, Turkey, Japan, Germany, Sweden, Italy, Finland, Netherlands, USA, Norway, Brazil, Lithuania, Morocco, S. Arabia, Reunion, UAE, Ukraine, Switzerland, Israel, Phillipines, Denmark, Belgium, Mexico, Kenya, Portugal, Egypt, Cyprus, Poland, Czech Rep, Iran, Madagascar, Monaco	33516003	1033413517
48191000 48219000	Cartons, boxes and cases of corrugated paper or paperboard, paper cement bags, sack, packing containers, box file, register, receipt book, binders, folders, Exercise Books of paper of paper board, Folding Cartoons, printed paper etc.	kg	UAE, Australia, Switzerland, China, India, Sri Lanka, Germany, France, UK, H. Kong, Indonesia, Lebanon, Italy, Malaysia, Netherlands, Singapore, Israel, S. Africa, Phillipines, Sweden, Austria, Portugal, Spain, Japan, Thailand, Morocco Belgium, USA, Finland, Pakistan, Korea Rep., Brazil, Denmark, Kuwait, Poland, Spain, Reunion, Monaco, Ireland, Turkey, Taiwan, Madagascar, Nepal, Romania, Senegal, Botswana, Canada, Kenya, Bangladesh, Argentine, Honduras, Chile, Oman, UK	2850427	424765442
48221000 48229000 48231900 48239090	Bobbins, spools, cops, self-adhesive paper, filter paper, rolls, sheets and dials, printed for self-recording machine, tray, dishes, plates of paper, other articles of paper, pulp etc printed paper or paperboard labels, Joss paper, Gaskets moulded or pressed articles of paper pulp unprocessed virgin mats.	kg	China, HongKong, India, Taiwan, France, Italy, UK, Denmark, Turkey, UAE, Finland, Luxembourg, Malaysia, Singapore, S. Africa, Belgium, Sweden, Switzerland, Tunisia, Taiwan, Germany, Spain, Japan, Thailand, Korea Rep., Madagascar Netherlands, Reunion, USA, Greece, Poland, Seychelles, Indonesia, Australia, Austria, Israel, Porto Rico, Portugal, Morocco, Japan, Kingdom of Lesotho, Ireland	2024400	120914468
94033000 94033090	Wooden Furniture of a kind used in offices, other wooden furniture	number	S. Africa, China, India, France, H. Kong, UK, Indonesia, Italy, Malaysia, Germany, Sweden, Pakistan, UAE, Madagascar, Egypt, Denmark, B	19474	59381251
94034000 94034090	Wooden Furniture of a kind used in the kitchen, other wooden furniture	number	China, France, UK, Belgium, Pakistan, Italy, Indonesia, India, S. Africa, Malaysia, Singapore, UAE, Brazil.	6314	22850506
94035000 94035010 94035090	Wooden furniture of a kind used in the bedroom, woodwn tables & other wooden furniture of a kind used in the bedroom	number	S. Africa, China, Italy, Indonesia, UAE, UK, Pakistan, India, USA, Malaysia, H. Kong, France, Denmark, Switzerland, Norway, Madagascar, Germany, Thailand, Reunion, Madagascar, Belgium, Spain, Singapore.	17503	69709235
94036010 94036090	Other wooden furnitures, Small hanging food safe wall cabinet of wood, Large scale rack & Shelving Systems of wood	number	China, India, France, UK, H. Kong, Denmark, Indonesia, Italy, Pakistan, Brazil, Thailand, Japan, Madagascar, Malaysia, S. Africa, Singapore, Reunion, Phillipines, Vietnam, Poland, Belgium, Tanzania, Germany, Taiwan, UAE, Spain, Malaysia, Canada, Iceland, Cuba, Cyprus, Bahamas, Netherlands, Australia, Switzerland, Egypt.	87612	122071031
					3,776,837,910

1 US \$ = 31 Mauritian Rupees

44089000